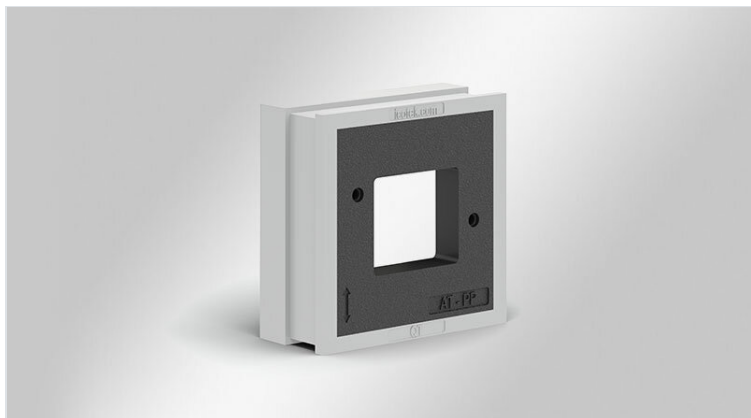


QT-AT-PP adaptertulen

gebaseerd op QT groot, voor PushPull-connectoren / IP54



IP54

HL3
EN 45545-2

ECOLAB
certified

UV
ISO 4892-2A

RoHS
compliant

REACH
COMPLIANCE

Made in
Germany



WE
CONTROL
COMPONENTS

[Bestel direct online @ CC Nederland »](#)



[Voor aanvragen uit België klik hier »](#)

The grommet QT-AT-PP is constructed on the basis of a large QT cable grommet. The polyamide body is moulded with elastomer.

The cut-out enables a screw assembly of all compact connector housings based on the PushPull device connection technology.

The insertion of QT-AT-PP into an icotek cable entry frame enables the routing of cables with and without connectors in combination with the creation of interfaces for PushPull connectors within one cable entry system. Separate cut-outs for connectors are no longer necessary.

QT-AT-PP provides ingress protection of up to IP54.

Specificaties

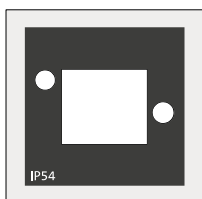
IP-classificatie (EN 60529)	IP54
Materiaal	Elastomeer Basisframe: Polyamide
Vlam klasse	UL94-V0, zelfdovend
Temperatuur	-40 C° tot 100 C°
Eigenschappen	zonder siliconen, halogeenvrij

Voordelen

- By utilising the QT-AT-PP grommet, connectors can be integrated directly into the cable entry frame
- Aparte uitsparingen voor connectoren zijn niet meer nodig
- Ruimtebesparende oplossing
- Grommet is suitable for PushPull housings
- Cost-saving assembly

Producttypes en maten

QT-AT-PP



Art.nr.	42602
EAN	4251269323010
Aantal	10
Lengte	40 mm
Breedte	39 mm
Hoogte	17 mm
Montage hoogte	2 mm

icotek[®]
smart cable management